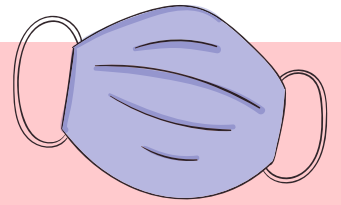


## If you **are not** fully vaccinated:

You are required to *mask* at all times in all areas of ChildServe.

*\*Fully Vaccinated* refers to someone who has had all recommended doses in their primary series.



## If you have recently been **exposed**:

You are required to *mask* at all times in all areas for the 10 days following your exposure.

## If you **are** fully vaccinated:

CDC Community Transmission Level ratings determine masking requirements:

If the CDC Community Transmission Level rating is **substantial** or **high**, you are required to *mask*.

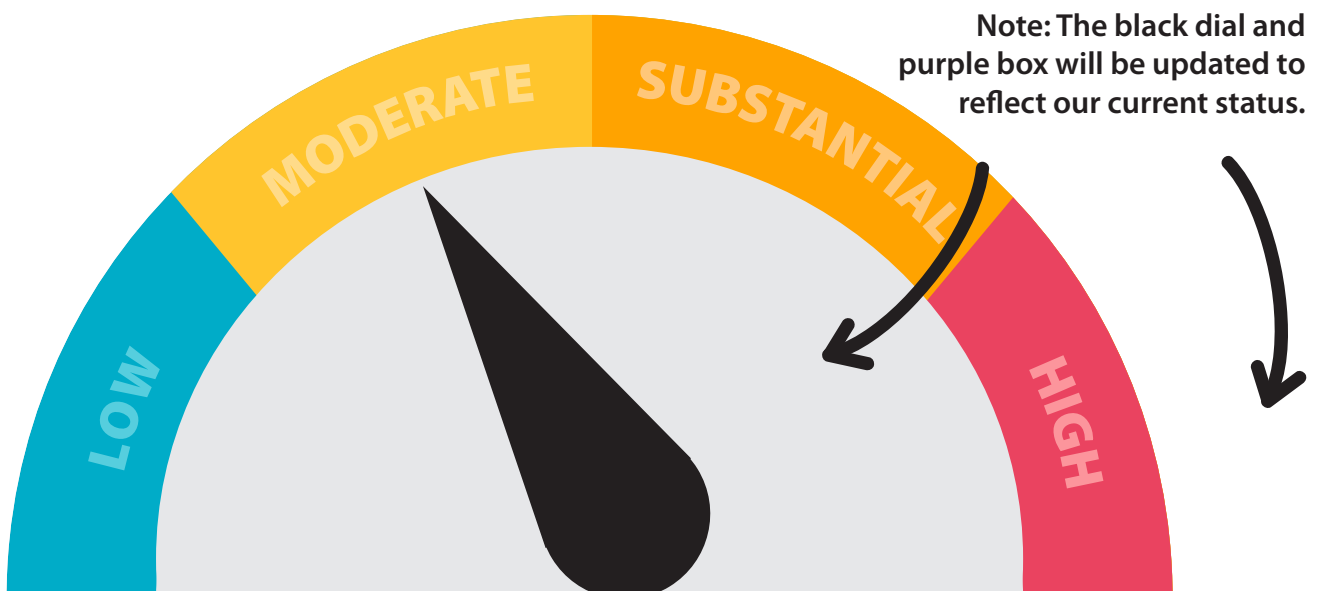


If the CDC Community Transmission Level rating is **low** or **moderate**, you have the option to *mask*.



## Current Requirements

Based on CDC Community Transmission Levels:



# Masking Optional